

5 Valve Manifolds - Direct Mounting

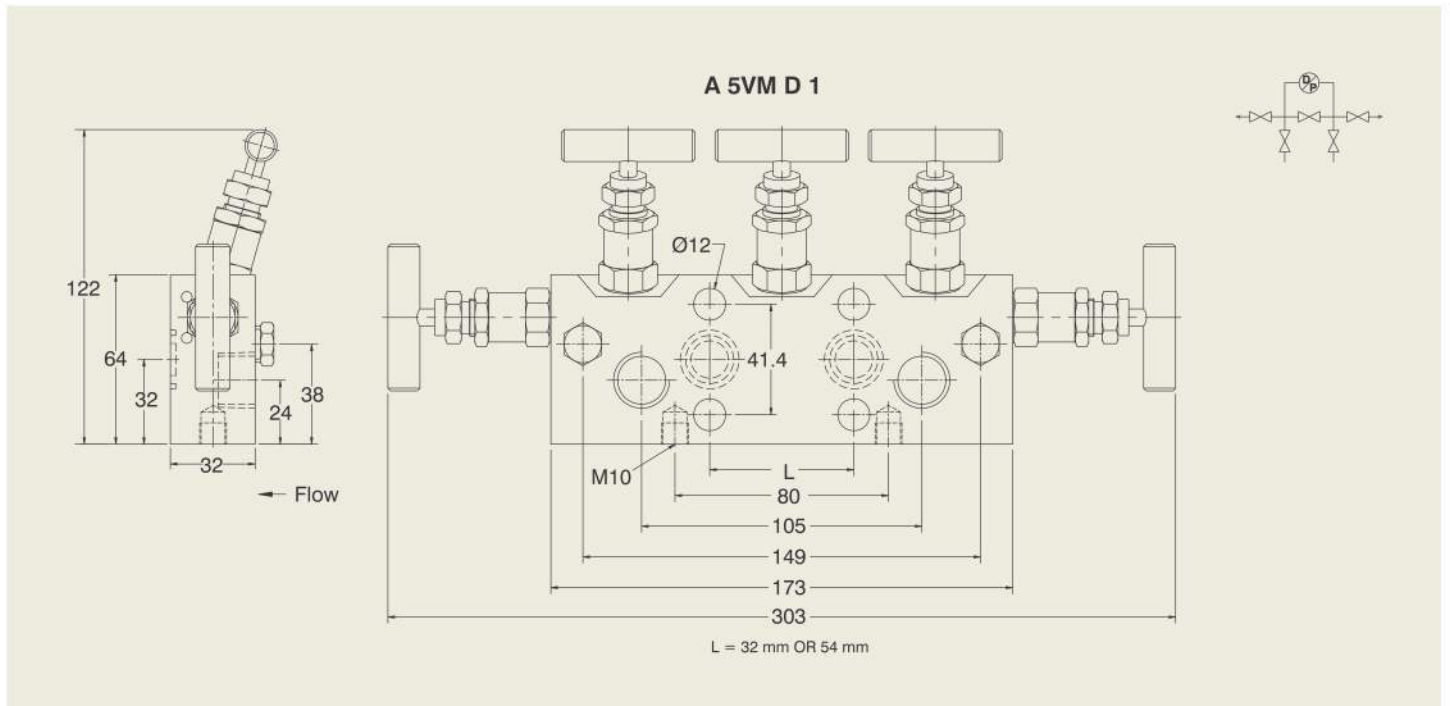
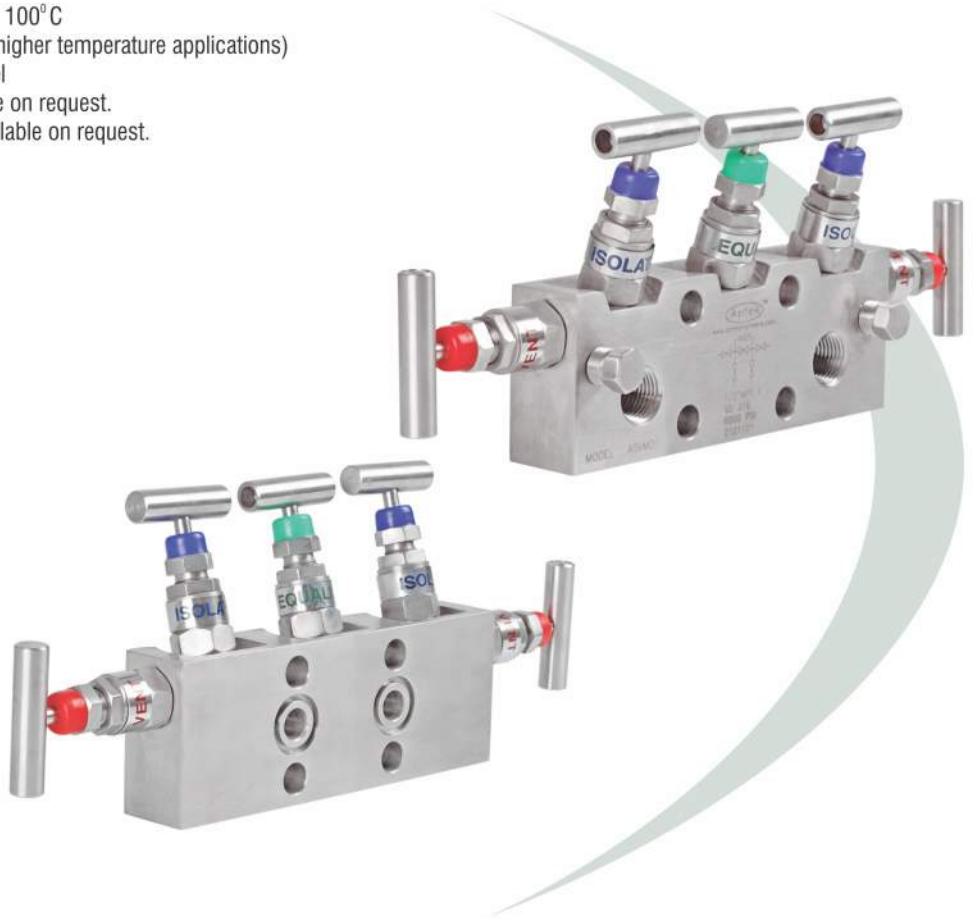
These valves are designed for direct mounting to differential pressure transmitter. The instrument side is provided with a standard flange of 54 mm or 32 mm center distance. These valves are having two isolation, one equalizer & two vent / calibration valves. The standard process & instruments connections are 1/2" NPT. Two vent connections are 1/4" NPT in all manifolds & provided with blanking plugs. Different models are available as shown.

(A 5VM D 1)

Standard Specifications :

- Maximum working pressure : 413 bar / 6000 PSI at 100° C
(see pressure temperature chart on Page No. 4 for higher temperature applications)
- Material : 316 SS / 316L SS / 304 SS / Carbon steel
- MOC in accordance with NACE MR0175 is available on request.
- Monel, Inconel, Hastelloy, Duplex steel are also available on request.
- Gland packing : PTFE / Graphite
- Standard process connection : 1/2" NPT F
- Standard Instrument connection : Flanged
- Drain : 1/4" NPT F

Weight : 3.30 kg



(A 5VM DH)



ISO 9001 : 2008 | PED 97/23/EC

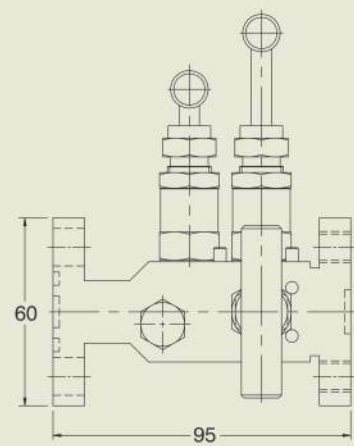
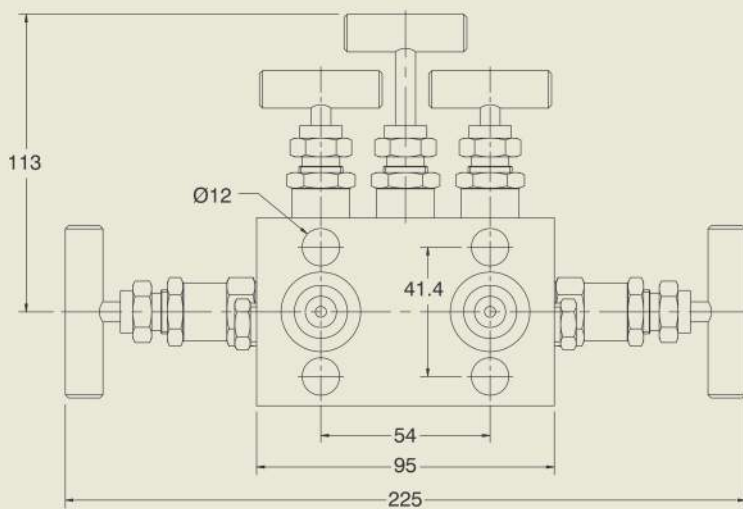
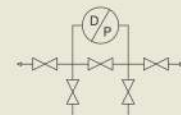
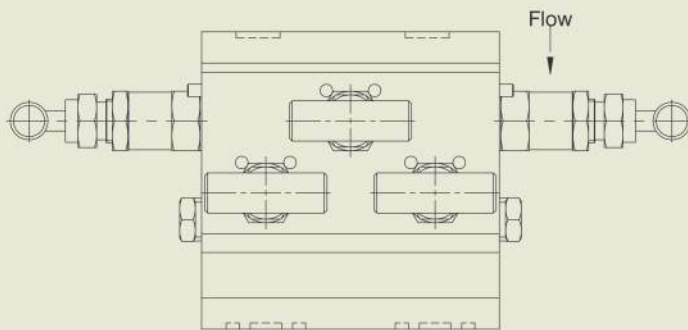
Standard Specifications :

Maximum working pressure: 413 bar / 6000 PSI at 100°C
(see pressure temperature chart on Page No. 4 for higher temperature applications)
Material : 316 SS / 316L SS / 304 SS / Carbon steel
MOC in accordance with NACE MR0175 is available on request.
Monel, Inconel, Hastelloy, Duplex steel are also available on request.
Gland packing : PTFE / Graphite
Standard process connection : Flanged
Standard Instrument connection : Flanged
Drain : 1/4" NPT F

Weight : 2.70 kg



A 5VM DH



5 Valve Manifold - Remote Mounting

These manifolds are designed for remote mounting on instruments using threaded instrument & process connections. These valves are having two isolation, one equalizer & two drain/calibration valves. The standard process & instrument connections are $\frac{1}{2}$ " NPT F & the drain connections are $\frac{1}{4}$ " NPT F. The blanking plugs are provided. The instruments connections are positioned at 54 mm center distance but can also be used for other center distances with the help of screwed fittings. Different models are available as shown below.

(A 5VM R 1)

Standard Specifications :

Maximum working pressure : 413 bar / 6000 PSI at 100° C
 (see pressure temperature chart on Page No. 4 for higher temperature applications)
 Material : 316 SS / 316L SS / 304 SS / Carbon steel
 MOC in accordance with NACE MR0175 is available on request.
 Monel, Inconel, Hastelloy, Duplex steel are also available on request.
 Gland packing : PTFE / Graphite
 Standard process connection : $\frac{1}{2}$ " NPT F
 Standard Instrument connection : $\frac{1}{2}$ " NPT F
 Drain : $\frac{1}{4}$ " NPT F

Weight : 2.70 kg

